



## LADY MAY

LADY MAY is one of the most outstanding yachts of her size ever built. Built by Feadship with naval architecture by Dubois and interior styling by RWD, LADY MAY is a true leader in her class. The combination of this impressive team resulted in the yacht winning a succession of awards in 2015.

The stunning lines of the yacht both appear sleek and hint at her highly efficient hull design. Her silver hull and superstructure make her instantly recognizable in every port and anchorage.

The interior is an elegant blend of white marble, bleached oak, stainless, and Macassar ebony that creates a modern yet warm and welcoming environment. The large windows allowing plenty of natural light in the saloon and the cleverly designed rotating seating area allows guests to maximise the stunning views.

The exterior guest areas on LADY MAY are finished are perfect for both entertaining and relaxing. The aft deck is spacious with a magnificent bar extending from within the main salon. The sundeck is impressive and beautifully detailed and can be converted to be semi-enclosed and air-conditioned for comfortable use in all climates.

LADY MAY is truly a unique and exemplary yacht from a renowned shipyard and embraces stylish design, finish and condition. She is ready for immediate use by a new owner.

[salesweb@burgessyachts.com](mailto:salesweb@burgessyachts.com) | [www.burgessyachts.com](http://www.burgessyachts.com)

LONDON  
+44 20 7766 4300

MONACO  
+377 9797 8121

NEW YORK  
+1 212 223 0410

MIAMI  
+1 305 672 0150

LOS ANGELES  
+1 310 425 5112

SINGAPORE | PALMA | MOSCOW  
ATHENS | SEATTLE | TOKYO

ASKING PRICE EUR 29,000,000 (USD 34,639,000\*)

BUILT 2014, Feadship, De Vries, The Netherlands

LENGTH 46.2m (151.6ft)

BEAM 9m (29.5ft)

DRAFT 2.2m (7.2ft)

GROSS  
TONNAGE 406

\*Price converted into the selected currency for comparison purposes based on current exchange rate

## KEY FEATURES

- Interior by RWD
- Naval architecture by Dubois
- Multiple Award winner at 2015 World Superyacht Awards
- Extensive use of glass throughout
- Extensive climate controlled convertible sundeck

TYPE Twin screw diesel yacht

CLASS Lloyd's + 100A1

FLAG Cayman Islands

EXTERIOR DESIGN Dubois Naval Architects

INTERIOR DESIGN RWD

CONSTRUCTION Hull - Aluminium, Superstructure - Aluminium, Deck - Teak

ENGINES 2 x 1,900hp Caterpillar

MAXIMUM SPEED 19 knots

CRUISING SPEED 15 knots

NO. OF GUESTS 10

NO. OF GUEST CABINS 5 (3 x Double, 2 x Twin)

CREW 8

TENDERS Williams 625 Jet Tender

LYING USA

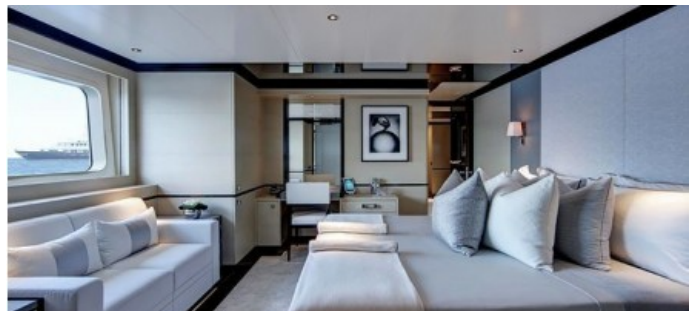
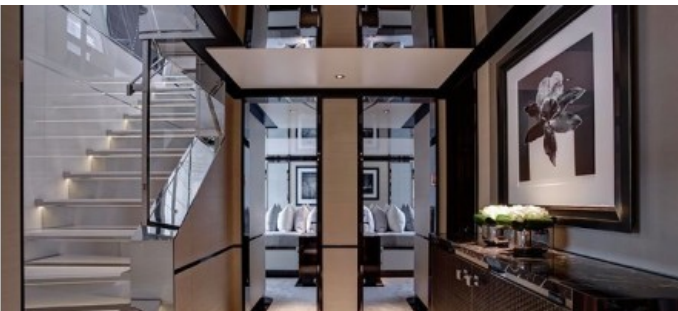
NOTE Not for sale to US residents while in US waters

[VISIT YACHT WEBSITE >>](#)

All particulars are believed correct but cannot be guaranteed.

[salesweb@burgessyachts.com](mailto:salesweb@burgessyachts.com) | [www.burgessyachts.com](http://www.burgessyachts.com)LONDON  
+44 20 7766 4300MONACO  
+377 9797 8121NEW YORK  
+1 212 223 0410MIAMI  
+1 305 672 0150LOS ANGELES  
+1 310 425 5112SINGAPORE | PALMA | MOSCOW  
ATHENS | SEATTLE | TOKYO





[salesweb@burgessyachts.com](mailto:salesweb@burgessyachts.com) | [www.burgessyachts.com](http://www.burgessyachts.com)

LONDON  
+44 20 7766 4300

MONACO  
+377 9797 8121

NEW YORK  
+1 212 223 0410

MIAMI  
+1 305 672 0150

LOS ANGELES  
+1 310 425 5112

SINGAPORE | PALMA | MOSCOW  
ATHENS | SEATTLE | TOKYO





[salesweb@burgessyachts.com](mailto:salesweb@burgessyachts.com) | [www.burgessyachts.com](http://www.burgessyachts.com)

LONDON  
+44 20 7766 4300

MONACO  
+377 9797 8121

NEW YORK  
+1 212 223 0410

MIAMI  
+1 305 672 0150

LOS ANGELES  
+1 310 425 5112

ATHENS | PALMA | MOSCOW  
SEATTLE | TOKYO



[salesweb@burgessyachts.com](mailto:salesweb@burgessyachts.com) | [www.burgessyachts.com](http://www.burgessyachts.com)

LONDON  
+44 20 7766 4300

MONACO  
+377 9797 8121

NEW YORK  
+1 212 223 0410

MIAMI  
+1 305 672 0150

LOS ANGELES  
+1 310 425 5112

SINGAPORE | PALMA | MOSCOW  
ATHENS | SEATTLE | TOKYO