



## CHASSEUR

Delivered in September 2016, the exquisite CHASSEUR is the ideal vessel for the discerning charterer.

A paragon of modern style, her stunning contemporary interior design features a foundational palette of serene neutral tones, expertly complemented by splashes of vibrant colour. The interior millwork is a blend of milk-glazed sycamore walls, teak and holly hardwood flooring, with rosewood joinery, including a hand-carved rosewood divider with shagreen panels bisecting the main saloon and formal dining area. Her hardwood floors are softened by area rugs of the finest silks and wool, and walls are adorned with prints by celebrated photographers Terry O'Neill, Greg Lotus, and Acey Harper.

An artful sensitivity to light and space amplifies her well-balanced design. Adjustable, discreet features throughout the yacht allow for customisation of illumination and mood, especially in the main saloon, where you'll find the striking panoramas offered by the wide picture windows. Her spatial engineering is clean and ample, with a wide selection of seating and lounging options designed to strike that perfect balance between style and comfort. Backlit crystal agate and mirrored glass compose the innately gregarious nature of her showcase sky lounge and sun deck. CHASSEUR offers al fresco dining options on two decks that allow her charterers to entertain in truly unforgettable fashion.

Formal dining is achieved via a custom-designed Armani table. Outside the dining room, the gently curved central staircase is a statement piece, a soaring sculpture visually augmented by floating glass stairs and woven leather walls. An original Mathieu Nab sculpture in Azove wood can be found at its centre, standing at an impressive 1.8 metres. Balancing function with class, a four-person elevator is also available on CHASSEUR, serving all decks.

CHASSEUR features six beautifully outfitted cabins for up to twelve guests. The full beam master suite has its own private office and daybed, and the spacious VIP suite offers furnishings by Hermes and Jean-Michel Frank. All other guest suites are appointed with the same diligent attention to detail, from the exotic onyx features sourced from around the world, to the under-floor heating for optimum comfort.

[dcweb@burgessyachts.com](mailto:dcweb@burgessyachts.com) | [www.burgessyachts.com](http://www.burgessyachts.com)

LONDRES  
+44 20 7766 4300

MONACO  
+377 9797 8121

NEW YORK  
+1 212 223 0410

MIAMI  
+1 305 672 0150

LOS ANGELES  
+1 310 425 5112

SINGAPORE | PALMA | MOSCOU  
ATHENS | SEATTLE | TOKYO

TARIFS D'ÉTÉ (HAUTE/BASSE SAISON)	EUR 273,000/EUR 231,000 per week	LARGEUR	9m (29.5ft)
CROISIÈRE ESTIVALE	West Mediterranean	TIRANT D'EAU	2.4m (7.9ft)
TARIFS D'HIVER (HAUTE/BASSE SAISON)	USD 294,000/USD 224,000 per week	MOTEURS	2 x 1,875hp Caterpillar
CROISIÈRE HIVERNALE	Caribbean & Bahamas	NBRE DE CABINES INVITÉS	6 (6 x Double, 1 x Additional Berths)
CONSTRUCTION	2016, Christensen Shipyards, United States Of America	SPORTS NAUTIQUES	12.2m (40ft) Intrepid tow tender with 3 x Mercury 350 x engines (arrival in Med mid-June so not available for charters before then), 7.5m (24.7ft) LX750 tender with 220hp Volvo D3 engine, 5.4m (17.9ft) Equator 540 tender with 200hp Volvo D3 engine, 2 x Sea-Doo GTX 155 x engines, waterskis, wakeboard & tows, 2 x SeaBobs, 2 x kayaks (2-man & 3-man), 2 x stand up paddle boards, 2 x kitesurfing boards, 4 x surfboards, 2 x JetSurfs, Snorkeling gear, Beach party set up,
LONGUEUR	48.8m (160ft)	COMMUNICATION & DIVERTISSEMENT	Comprehensive audio-visual systems, satellite television, Apple TV . Satcom & cellular communications facilities, VSAT, VIOP, Wi-Fi internet access.
VITESSE DE CROISIÈRE	12 knots		
PASSAGERS	12		
ÉQUIPAGE	10		
CARACTÉRISTIQUES PARTICULIÈRES	Selection of watersport toys, Portugueses bridge & foredeck seating areas. Elevator, Jacuzzi, Zero speed stabilisers.		

[VISITER LE SITE DU YACHT >>](#)

Tous les détails sont considérés corrects mais ne peuvent être garantis

[dcweb@burgessyachts.com](mailto:dcweb@burgessyachts.com) | [www.burgessyachts.com](http://www.burgessyachts.com)

LONDRES  
+44 20 7766 4300

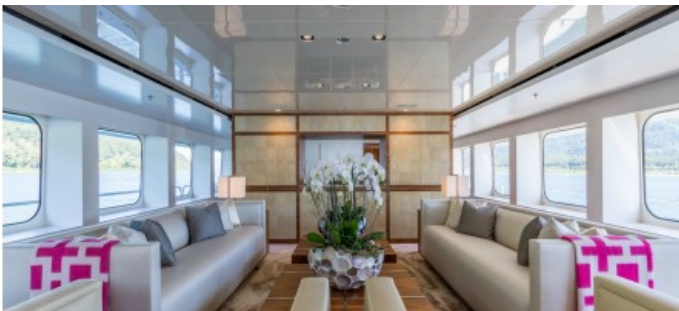
MONACO  
+377 9797 8121

NEW YORK  
+1 212 223 0410

MIAMI  
+1 305 672 0150

LOS ANGELES  
+1 310 425 5112

SINGAPORE | PALMA | MOSCOU  
ATHENS | SEATTLE | TOKYO



[dcweb@burgessyachts.com](mailto:dcweb@burgessyachts.com) | [www.burgessyachts.com](http://www.burgessyachts.com)

LONDRES  
+44 20 7766 4300

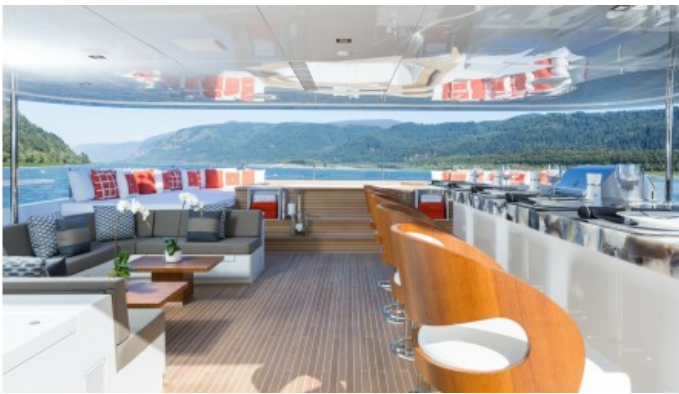
MONACO  
+377 9797 8121

NEW YORK  
+1 212 223 0410

MIAMI  
+1 305 672 0150

LOS ANGELES  
+1 310 425 5112

SINGAPORE | PALMA | MOSCOU  
ATHENS | SEATTLE | TOKYO



[dcweb@burgessyachts.com](mailto:dcweb@burgessyachts.com) | [www.burgessyachts.com](http://www.burgessyachts.com)

LONDRES  
+44 20 7766 4300

MONACO  
+377 9797 8121

NEW YORK  
+1 212 223 0410

MIAMI  
+1 305 672 0150

LOS ANGELES  
+1 310 425 5112

SINGAPORE | PALMA | MOSCOU  
ATHENS | SEATTLE | TOKYO